



# WELCOME TO SEATON SLUICE FIRST SCHOOL NURSERY 2023



*"Nurturing Excellence"*





*On behalf of everyone here at Seaton Sluice First School, WELCOME to a new and exciting stage in your child's life.*



*"Nurturing Excellence"*

# THE EARLY YEARS FOUNDATION STAGE

*There are three prime areas that underpin everything we do. They are crucial to children's early learning and development:*

- Communication and language;*
- Physical development;*
- Personal, social and emotional development*



*In addition there are four specific areas, through which the three prime areas are strengthened and applied. The specific areas are:*

- Literacy;*
- Mathematics;*
- Understanding the world*
- Expressive arts and design.*



# THE EARLY YEARS FOUNDATION STAGE

*The foundation stage begins in Nursery and carries through to Reception.*

*We help the children learn through playing, exploring being active. This means that the children will take part in a range of fun, practical activities; some of which are adult led, some guided by adults and some will be child initiated.*

*Themes start around what the children know and what they are interested in finding out. Children explore the outdoor learning environment regardless of the weather.*



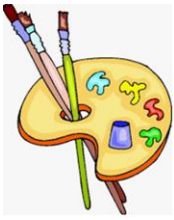
***“Nurturing Excellence”***

# WHAT WILL MY CHILD DO AT NURSERY?

*The EYFS is a play based curriculum. The classroom is set up into different areas to support your child's learning and development. As well as child initiated activities and learning the children will also have focused activities to complete throughout the areas of the classroom.*

*The children will also take part in a variety of group times and Teacher Led Activities.*





# 15 OR 30 HOURS???



*If you are undecided about taking up the 30 hours offer, here are some of the benefits:*

- More time for learning and developing skills*
- Better preparation for school and a seamless transition*
  - Improved socialisation skills*
  - A more consistent routine*

*-Opportunities to do more extra curricular activities such as baking and gardening*

- Better support for working parents*

*Don't worry if your child is tired at first, they will quickly settle into their new routine.*



# KEY INFORMATION



*Nursery times:*

*8.45-3.00 (30 hours offer)*

*8.45-12.15 (15 hours offer)*

*(Please note the two week induction period)*

*Please organise childcare for the two week induction period. It is vital that we settle the children into Nursery calmly and steadily, even if they have attended other childcare settings.*

*(Please note that our daily start and finish times more than cover any lost hours during the induction period. Therefore it is not possible to claim hours back or to use them in other childcare settings)*

# KEY INFORMATION

*Your child's first morning in Nursery*



*-The KS1 gate will give you access onto the school grounds. You can then make your way to the Nursery classroom door where the children will enter and exit.*

*-Queue with your child and leave them once handed over to us at the door. We will help to settle them.*

*Children who become upset usually calm down very quickly and we will contact you if there are any problems. You are welcome to ring school to see how your child is getting on.*

*Please be patient with us. We want all of the children in and out safely. This takes a while with 26 children.*



# KEY INFORMATION



Lunch:

*All children will stay for packed lunch*

*Lunchtime is an opportunity for the children to learn and develop many new skills.*

*The benefits of staying for lunch include:*

- Using a knife, fork and spoon*
- Sitting at a table together*
- Developing social skills*
- Getting into a good routine*
- Learning table manners*
- Seamless transition into Reception class*

# KEY INFORMATION

*Please provide your child with a healthy packed lunch.*

*NO sweets, chocolate or fizzy drinks.*



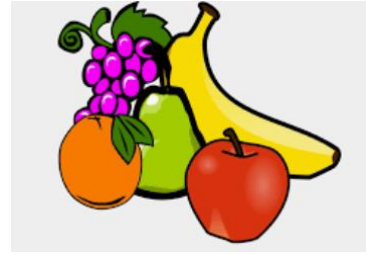
*Your child only needs a small packed lunch. This could include:*

*One sandwich, one piece of fruit, one yogurt and one packet of crisps.*

*Please find further information on healthy packed lunch ideas below:*

*<https://www.nhs.uk/healthier-families/recipes/healthier-lunchboxes/>*

# KEY INFORMATION



## Snack

*All children will have a daily snack. This includes either a piece of fruit or a vegetable, and a carton of milk.*



*If your child has any food allergies, please speak to a member of staff and we can discuss their needs further.*



# ATTENDANCE

*Children must attend all 15/30 hours sessions. They are not optional.*

*-Please let us know if someone different is collecting your child. They will also need to use the pick up password  
(In your pack)*

*If your child is going to be absent from Nursery, please call the office and speak with Mrs Johnson or leave a  
message via telephone or Parent Mail.*

*-If your child is ill, please contact the school office asap  
(You must keep your child off school for 48 hours after the last  
bout of sickness or diarrhoea.)*



*-Please keep all phone numbers and contact details up to date in the office.*

# TOILETING

*We have small toilets based in the nursery classroom.  
The children have access to these throughout the  
day.*



*If your child is not yet toilet trained, please do work on this over the summer. We are here to support the children in using the toilet but this must be done primarily at home.*

*If your child is not toilet trained due to medical reasons, please do speak to us and we will support your child as much as we can.*

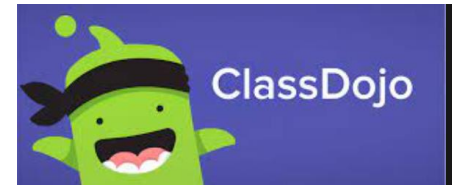
# WORRIES




*If you are worried about your child in any way, please do not hesitate to speak with us.*

*No matter how big or small the worry, we are here to help.*

# CLASS DOJO



*We will use an online platform called ClassDojo to share information with you.*

 ClassDojo

Mrs. McBride has invited you to join ClassDojo

Ready for an awesome year? ClassDojo makes it easy to support your child at school.

Click on this special link to join your class:  
<https://classdojo.com/PD8Q8ZTDE>

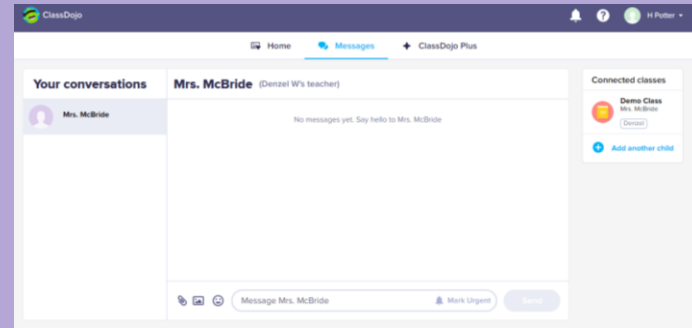
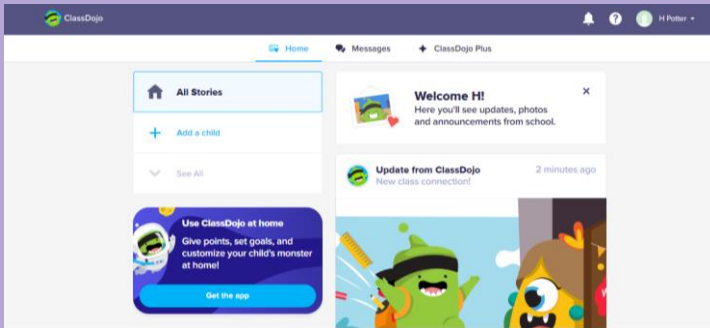
And stay tuned for fun photos and important updates throughout the school year!

- *Class Story*
- *Portfolio*
- *Messages*

 **Mrs. McBride**  
Demo Class Sep 19, 2021

This week the children have been...

 Like  Comment 



# UNIFORM



*-Uniform should be easy for your child to manage for toilet trips*

*-No laces. No jumpsuits. No tricky fastenings please.*

*-Please leave a clearly labelled drawstring bag of **spare clothes** in school.*

*(No large bags or rucksacks please)*

*-All children need a book bag*

*-Please bring in a pair of wellies to leave in school*

*-No P.E kit needed yet*

*-NO jewellery*

*-Please dress appropriately for all weathers. (We are outside in all weathers)*

*-Please bring in a clearly labelled water bottle each day*

*Please label **EVERYTHING!** Even shoes and Wellies as it will go missing.*





WE ARE LOOKING FORWARD TO WELCOMING  
YOU AND YOUR CHILD TO THE SEATON SLUICE  
FAMILY.



*"Nurturing Excellence"*